



Shepherd's Bush
Road W6

finlay
brewer

Flat 4 - 132 Shepherds Bush Road W6

STUDIO

KITCHENETTE

SHOWER ROOM

EPC RATING: C 76

COUNCIL TAX BAND: B

LEASE LENGTH: 999 YEARS APX

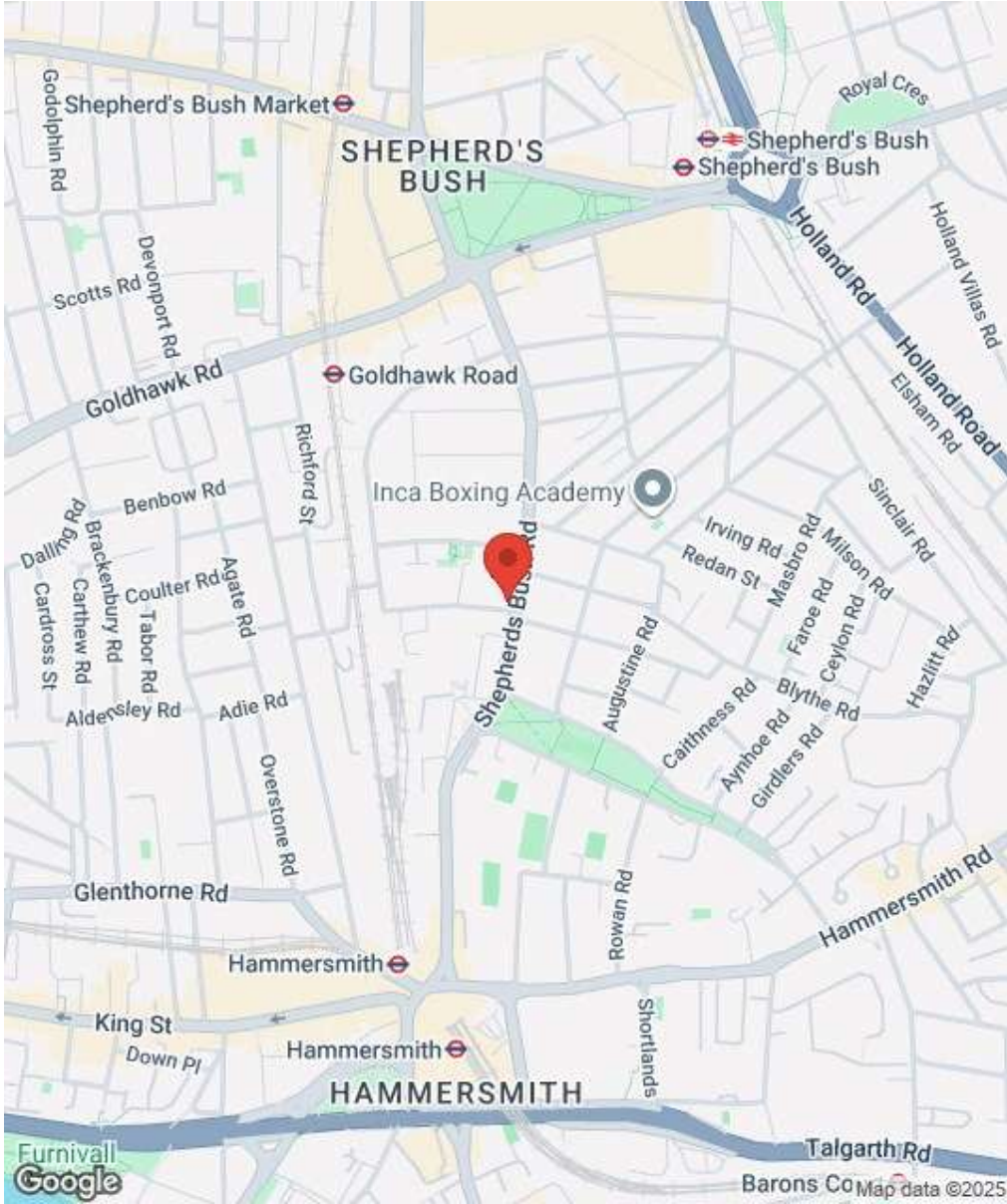
SERVICE CHARGE: ASK AGENT

A well configured studio apartment which occupies the front of a raised ground floor handsome Victorian house. The property comprises of a very good sized reception room with high ceilings, a fitted kitchen and bathroom. This well-presented apartment of approximately 248 sq ft is well positioned for excellent transport links of Shepherds Bush & Hammersmith, making it easy to access central London and beyond. Residents enjoy proximity to Westfield Mall as well as a wide range of local amenities including cafes, restaurants, and green spaces.

£235,000
LEASEHOLD - 999 YEARS

SUBJECT TO CONTRACT



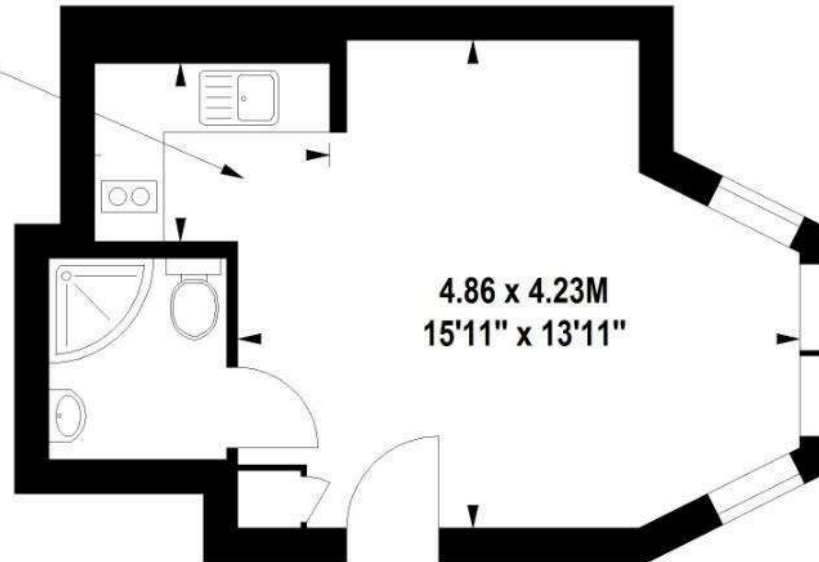


Shepherds Bush Road , W6

Approximate gross internal area

23 sq m / 248 sq ft

KITCHEN
2.07 x 1.55M
6'9" x 5'1"



4.86 x 4.23M
15'11" x 13'11"

Raised Ground Floor

Floor Plan produced for Finlay Brewer by Mays Floorplans © . Tel 020 3397 4594

Illustration for identification purposes only, not to scale.

All measurements are maximum and include wardrobes and window bays where applicable.